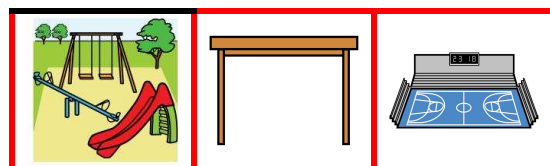
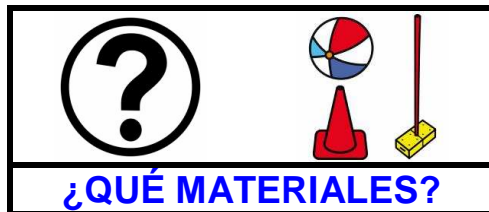
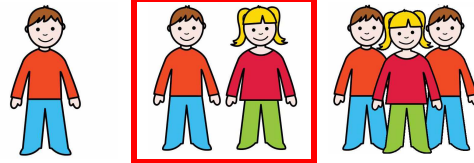
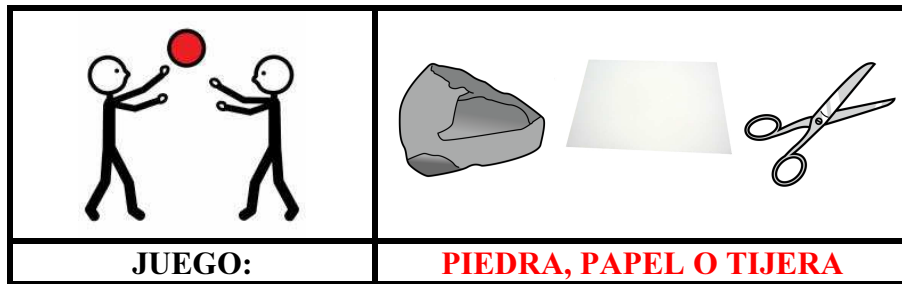
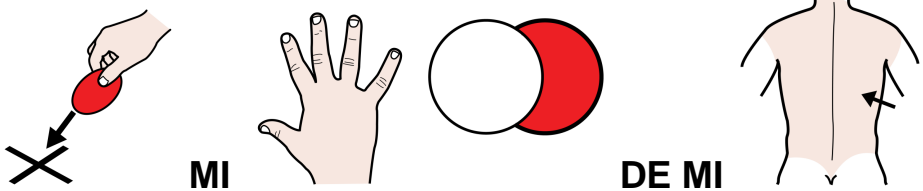
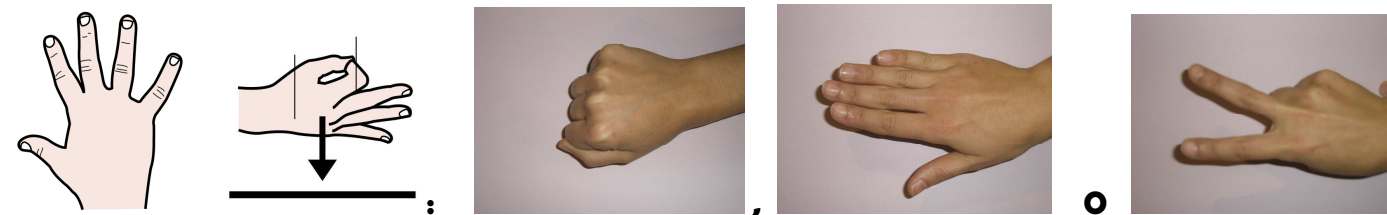
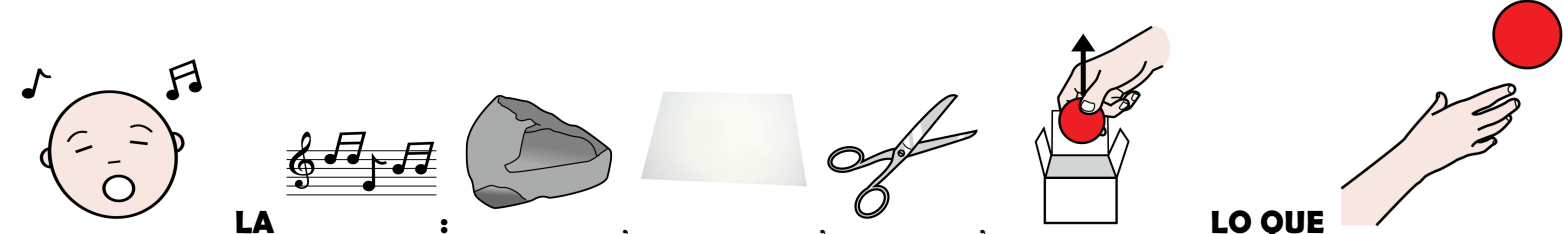


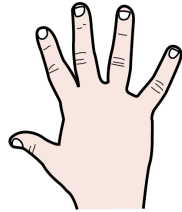
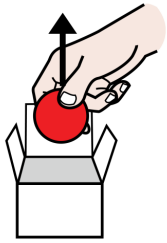
JUEGOS ADAPTADOS

C.P.E.I.P. Ramón y Cajal (Cuarte de Huerva)
Marta Pe, María Romero, Ana Moliner, Ana Vicente
Curso 2009/2010
Seminario TGD



1º	 <p>MI DE MI PONGO MI MANO DETRÁS DE MI ESPALDA.</p>
2º	 <p>PIENSO : PIEDRA, PAPEL O TIJERA.</p>
3º	 <p>MI MANO ES : PIEDRA, PAPEL O TIJERA.</p>
4º	 <p>LA CANTAMOS LA CANCIÓN: "PIEDRA, PAPEL O TIJERA, SACA LO QUE QUIERAS"</p>

5º

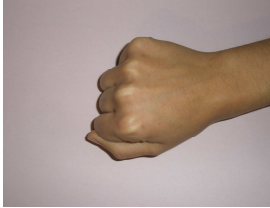


LA

SACAMOS LA MANO.

6º

PIEDRA GANA A TIJERA



A



PAPEL GANA A PIEDRA



A



TIJERA GANA A PAPEL



A



